

### Gas Detector Stand

#### General Stand Specifications:

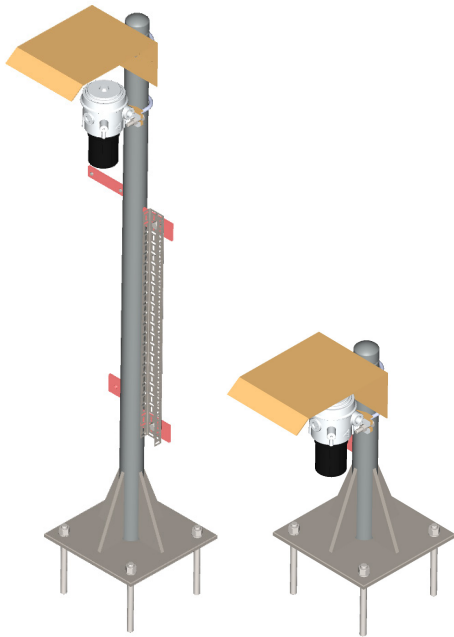
InstruPack Flammable/Toxic Gas detector stands are made from 2" Schedule 40 pipe and feature a flat cap design..

The standard stands include a 10" x 10" x 3/8" base plate, with various sizes and thicknesses available upon request. Gussets can be optionally added for extra support as needed.

InstruPack provides Hot Dipped Galvanized Carbon Steel as the standard material, with optional materials, coatings, or painting available upon request. Hot Dipped Galvanized stands include weep holes and an open base to facilitate drainage.

Optional accessories such as sunshades, vertical cable tray, supports, earth tongues, detector tag plate strips, and 4 anchor fasteners are available upon request. It is advisable to include all accessories with the stand to minimize integration issues and potential material shortages at the construction site.

All accessories are supplied with the stand, accompanied by mounting fixers such as U clamps and nut bolts, following rigorous verification of integrity across all items directly from the factory.



Example: IPGDS- 2 FS- 1- GV- 60- 8- SS- 4G/E/CT/\*

Basic Part:  
InstruPack Gas Detector Stand

Size of Pipe: 2" / 3"

Type of Mount: Floor Stand (FS)

No. of Columns: 1

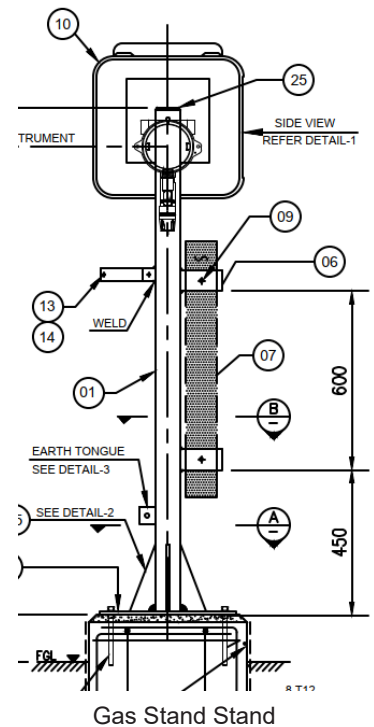
Material Finish:  
Galvanized (GV), 304SS (4SS),  
316SS (6SS), Painted (PT)

Heights:  
Specify Height in Inches  
(Standard is 52", 54" & 60")

Base Plate Size:  
8" x 8" x 3/8" : 8  
10" x 10" x 1/4" : 10

Sunshade: SS

Optional  
Gussets: 2G/4G  
Earth Tongue: E  
Vertical Cable Tray 50 mm: CT  
F&G Equip. Tag plate strip: TPS  
F&G Equip. Tag Plate (SS): ITP



Gas Stand Stand

