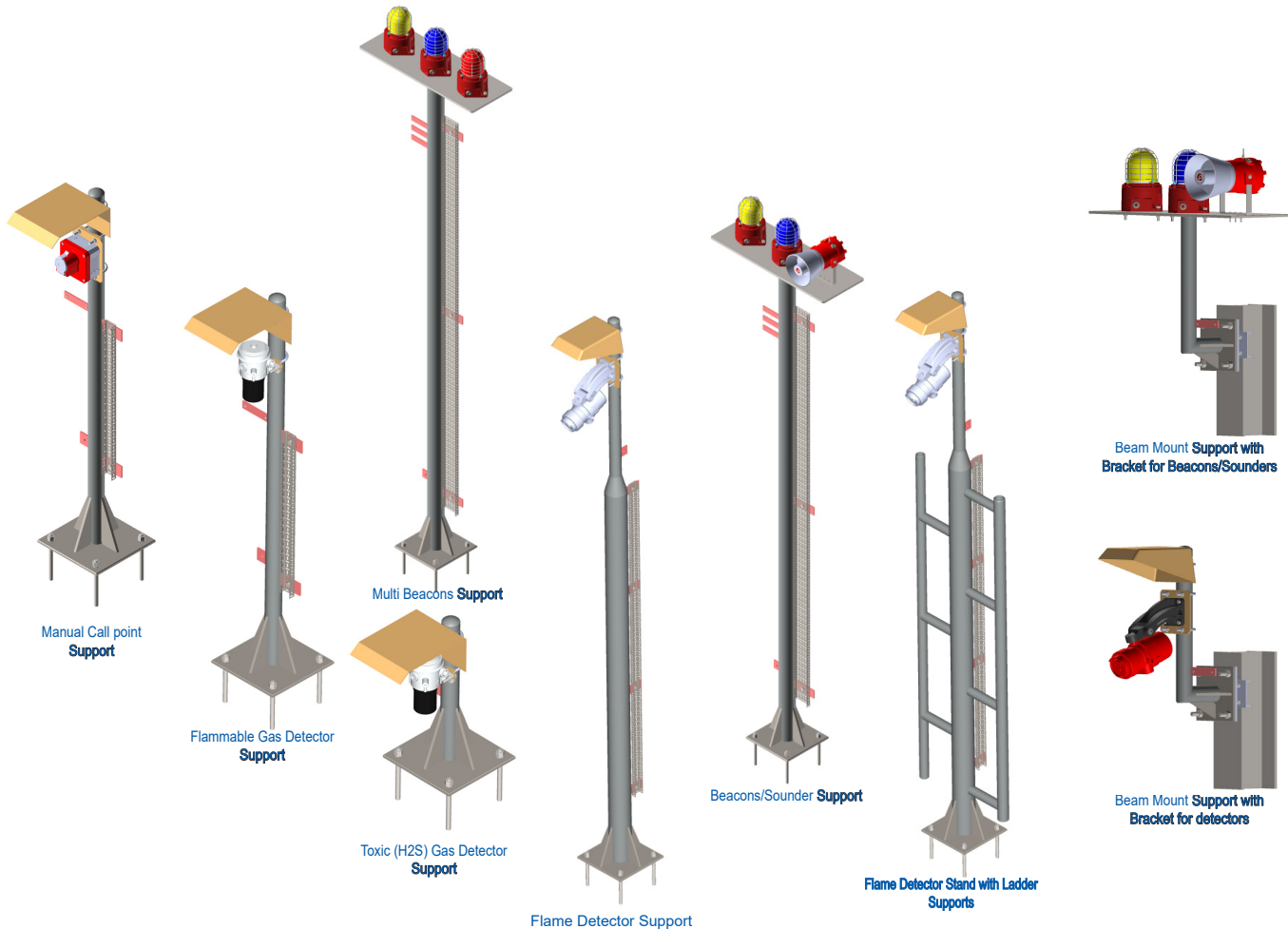


InstruPack

Instrumentation & Electrical Equipment Supports Manufacturer

InstruPack's F&G Equipment Mounting Supports



F&G Equipment Supports

- Flame Detector, Flammable gas detector, Toxic Gas Detector mounting Stands, Beacons, Sounder mounting Supports, Manual Call Point mounting Supports
- Hot Dipped Galvanized, Stainless Steel, Painted

Accessories

- Anchor Fasteners, Sunshades, U clamps,
- Nuts / bolts, F&G Equipment Tag plates.
- Earthing cords, Grating clamps,
- Beam Mount Bracket

Industries

- Oil & Gas, Petroleum Refining,
- Liquid Natural Gas (LNG),
- Power Generation
- Marine, Offshore

InstruPack

www.InstruPack.com

InstruPack

Instrumentation & Electrical Equipment Supports Manufacturer

Office Address: SF-26, Divya Plaza, Opp, Kamalanagar Lake Ajwa Road, Vadodara, Gujarat, India- 390019

Contact Details: +91 9725078592

Email: Rptechsolutions@outlook.com, instrupack@outlook.com

InstruPack

Instrumentation & Electrical Equipment Supports Manufacturer

InstruPack's F&G Equipment Mounting Supports

InstruPack's prefabricated supports for fire and gas equipment offer a reliable, integrated solution with significant advantages compared to on-site fabricated supports. Available in a range of designs and configurations, these supports accommodate various types of fire and gas equipment, including flame detectors, flammable gas detectors, toxic (H₂S) detectors, sounders, beacons, manual call points, and more.

Benefits of InstruPack Supports



Easier Installation and Increased Customizability

- Typical designed for quick and straight forward installation
- Faster assembly and reducing downtime during installation



Standardization

- Simplify procurement, installation, and maintenance processes.
- Interchangeability between different types of Instruments and components Installation



Engineered Packaging

- Stands with all accessories are in one box/pallet reducing the site material handling, shortage and effectively reducing the idle man-hours at a construction site
- Area Wise Packing reduces the material handling at site
- Integrated supply chain to support site construction schedule

F&G Equipment Support Types

- Flame Detector Stand, with and without ladder
- Flammable gas detector Stands
- Toxic (H₂S) Detector Stands
- Beacons and Sounders Stands
- Manual call Point Stands
- Beam Mount Brackets with Stands

Accessories

- Anchor Fasteners,
- Sunshades,
- U clamps,
- Nuts / bolts, F&G devices/Equipment Tag plates.
- Earthing cords, Grating clamps,
- Beam Mount Bracket



Cost-Effectiveness

- Reduce engineering and design time.
- Cataloged components eliminate design details.
- Minimize Material Wastage
- Minimize workers for Installation.
- Effectively reduce the ideal man-hours at the construction site
- Reduce Skilled workers requirement at remote construction site



Enhanced Safety:

- Minimize Site fabrication effectively reduce Lost Time Injury (LTI)
- Minimize Hot work requirements.



Improved Quality Assurance

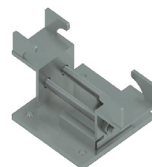
- Produced in ISO 9001 facility.
- Raw material procurement as per end user specification and AVL
- Hot dip galvanizing, painting, and coating as per Instrupack standards or as per end user specification
- Excellent Corrosion Resistance

Materials and Finishes

- Hot-dipped Galvanized
- 304SS
- 316SS
- Painted

Applications of InstruPack's Supports

- Installation of Flame detectors, Flammable gas detectors, Toxic Detectors
- Installation of Beacons, Sounders, Manual Call points



Beam Mount Bracket

